

# NEBRASKA EMERGENCY ALERT SYSTEM (EAS) STATE PLAN

OCTOBER 1, 2007

## SCOPE

The purpose of this plan is to create a functional interconnecting EAS web system to disseminate coded emergency information to all broadcast and cable operations in the state of Nebraska. Broadcast and cable operators are mandated to respond to national and presidential emergency messages. Response to state and local emergencies is voluntary but assumed to be performed consistent with providing public service for the community each operator serves. Complete FCC EAS rules and regulations may be viewed at <http://www.fcc.gov/eb/eas>.

This plan is a living document and may be changed or updated at any time by forwarding the appropriate information to the proper state and federal offices. All communities are expected to create their own specific emergency plans plan for dealing with their specific local emergencies.

All stations are required to monitor two sources for EAS messages. Additionally each station is encouraged to monitor their network and additional local sources to obtain additional input for national and local emergencies.

## STATE RELAY NETWORK

All Nebraska Educational Television (NETV) and Nebraska Public Radio Network (NPRN) stations (including KVNO in Omaha) are designated as state relay stations (SR) with KUON-TV (Lincoln) designated the state primary station (SP). All state primary and relay stations (SP, SR) will monitor NOAA weather radio for input #1 and the closest LP-1 station for input #2. KUON-TV (SP) will also use #3 monitor input for the state EOC communications link. KUON-TV input #4 will monitor NPR Cue (squawk) channel which relays all National EAS messages.

## LOCAL PRIMARY STATIONS

The Nebraska EAS plan requires all local stations (LP-1, LP) to monitor the state relay network on input #2 and NOAA all hazards radio on input #1.

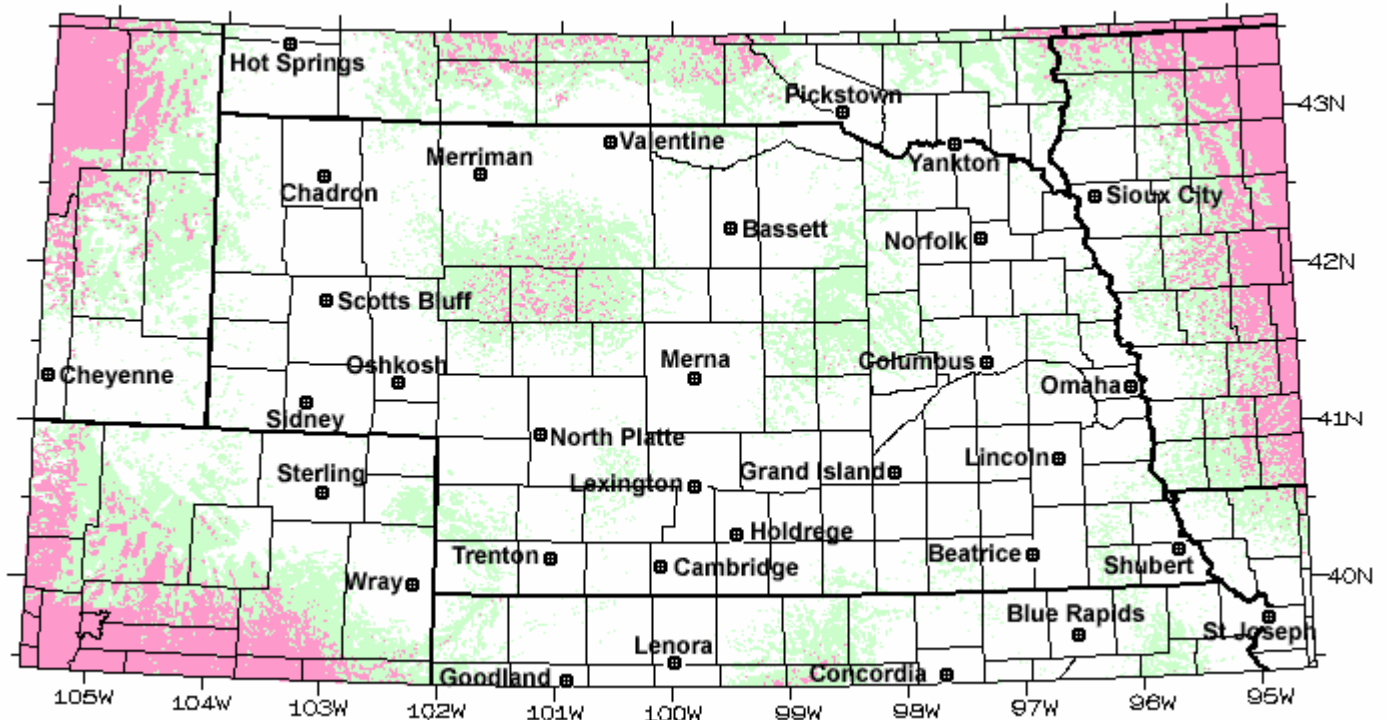
Stations that can not receive NOAA all hazards radio will monitor their closest LP-1 station. All other Nebraska stations are designated local primary stations (LP).

(SR) State Relay Stations EAS Input #2 for All LP-1 and LP Stations

Location	TV	Chn	FM	Freq MHz
Alliance	KTNE-TV	13	KTNE-FM	91.1
Bassett	KMNE-TV	7	KMNE-FM	90.3
Chadron			KCNE-FM	91.9
Hastings	KHNE-TV	29	KHNE-FM	89.1
Lexington	KLNE-TV	3	KLNE-FM	88.7
Lincoln	KUON-TV	12	KUCV-FM	91.1
Merriman	KRNE-TV	12	KRNE-FM	91.5
Norfolk	KXNE-TV	19	KXNE-FM	89.3
North Platte	KPNE-TV	9	KPNE-FM	91.7
Omaha	KYNE-TV	26	KVNO-FM	90.7

NOAA Weather Radio Stations EAS Input #1 For All Stations

NWR TRANSMITTER.....	NE	CALL	FREQ MHZ	WATTS	<a href="#">NWS PROGRAMMING OFFICE</a>
BASSETT	NE	WXL73	162.475	630	NORTH PLATTE, NE
BEATRICE	NE	KZZ69	162.450	300	OMAHA, NE
CAMBRIDGE	NE	KEC39	162.525	300	HASTINGS, NE
CHADRON	NE	KXI20	162.525	1000	CHEYENNE, WY
COLUMBUS	NE	WNG549	162.450	1000	OMAHA, NE
GRAND ISLAND	NE	WXL74	162.400	1000	HASTINGS, NE
HOLDREGE	NE	WXL75	162.475	1000	HASTINGS, NE
LEXINGTON	NE	KG99	162.450	300	HASTINGS, NE
LINCOLN	NE	WXM20	162.475	1000	OMAHA, NE
MERNA	NE	WXN72	162.500	1000	NORTH PLATTE, NE
MERRIMAN	NE	WXL76	162.400	800	NORTH PLATTE, NE
NORFOLK	NE	WXL77	162.550	800	OMAHA, NE
NORTH PLATTE	NE	WXL68	162.550	1000	NORTH PLATTE, NE
OMAHA	NE	KIH61	162.400	1000	OMAHA, NE
ORD	NE	KWN62	162.525	1000	HASTINGS, NE
OSHKOSH	NW	KHA55	162.525	1000	NORTH PLATTE, NE
SCOTTSBLUFF	NE	WXL67	162.475	1000	CHEYENNE, WY
SHUBERT	NE	KWN41	162.500	1000	OMAHA, NE
SIDNEY	NE	WXN61	162.500	1000	CHEYENNE, WY
SUPERIOR	NE	WNG578	162.525	1000	HASTINGS, NE
TRENTON	NE	WNG524	162.500	300	GOODLAND, KS
VALENTINE	NE	WXN82	162.450	1000	NORTH PLATTE, NE



ST.	COUNTY	SAME #	NWR TRANSMITTER	FREQ.	CALL	WATTS	REMARKS
NE	Adams	031001	Grand Island NE	162.400	WXL74	1000	
NE	Adams	031001	Superior NE	162.525	WNG578	1000	
NE	Antelope	031003	Norfolk NE	162.550	WXL77	800	
NE	Arthur	031005	North Platte NE	162.550	WXL68	1000	
NE	Banner	031007	Scottsbluff NE	162.475	WXL67	1000	
NE	Blaine	031009	Bassett NE	162.475	WXL73	630	
NE	Boone	031011	Norfolk NE	162.550	WXL77	800	
NE	Box Butte	031013	Scottsbluff NE	162.475	WXL67	1000	
NE	Box Butte	031013	Chadron NE	162.525	KXI20	1000	
NE	Boyd	031015	Bassett NE	162.475	WXL73	630	
NE	Boyd	031015	Pickstown SD	162.425	KXI25	300	
NE	Brown	031017	Bassett NE	162.475	WXL73	630	
NE	Buffalo	031019	Grand Island NE	162.400	WXL74	1000	
NE	Buffalo	031019	Holdrege NE	162.475	WXL75	1000	
NE	Burt	031021	Omaha NE	162.400	KIH61	1000	
NE	Butler	031023	Lincoln NE	162.475	WXM20	1000	
NE	Butler	031023	Columbus NE	162.450	WNG549	1000	
NE	Cass	031025	Lincoln NE	162.475	WXM20	1000	
NE	Cass	031025	Omaha NE	162.400	KIH61	1000	
NE	Cedar	031027	Norfolk NE	162.550	WXL77	800	
NE	Cedar	031027	Yankton SD	162.500	KXI21	1000	
NE	Chase	031029	North Platte NE	162.550	WXL68	1000	
NE	Cherry	031031	Merriman NE	162.400	WXL76	800	West
NE	Cherry	031031	Valentine NE	162.450	WXN82	1000	East
NE	Cheyenne	031033	Scottsbluff NE	162.475	WXL67	1000	
NE	Cheyenne	031033	Sidney NE	162.500	WXN61	1000	
NE	Clay	031035	Grand Island NE	162.400	WXL74	1000	
NE	Clay	031035	Superior NE	162.525	WNG578	1000	
NE	Colfax	031037	Norfolk NE	162.550	WXL77	800	

NE	Colfax	031037	Columbus NE	162.450	WNG549	1000
NE	Cuming	031039	Norfolk NE	162.550	WXL77	800
NE	Custer	031041	Merna NE	162.500	WXN72	1000
NE	Dakota	031043	Sioux City IA	162.475	WXL62	1000
NE	Dawes	031045	Chadron NE	162.525	KXI20	1000
NE	Dawson	031047	Holdrege NE	162.475	WXL75	1000
NE	Dawson	031047	Lexington NE	162.450	KGG99	300
NE	Deuel	031049	Sidney NE	162.500	WXN61	1000
NE	Deuel	031049	Oshkosh NE	162.525	KHA55	1000
NE	Dixon	031051	Sioux City IA	162.475	WXL62	1000
NE	Dodge	031053	Omaha NE	162.400	KIH61	1000
NE	Dodge	031053	Columbus NE	162.450	WNG549	1000
NE	Douglas	031055	Omaha NE	162.400	KIH61	1000
NE	Dundy	031057	Wray CO	162.475	WXM87	100
NE	Dundy	031057	Trenton NE	162.500	WNG524	300
NE	Fillmore	031059	Grand Island NE	162.400	WXL74	1000
NE	Fillmore	031059	Superior NE	162.525	WNG578	1000
NE	Franklin	031061	Holdrege NE	162.475	WXL75	1000
NE	Franklin	031061	Kirwin KS	162.500	KWN59	1000
NE	Frontier	031063	North Platte NE	162.550	WXL68	1000
NE	Frontier	031063	Cambridge NE	162.525	KEC39	300
NE	Furnas	031065	Holdrege NE	162.475	WXL75	1000
NE	Furnas	031065	Cambridge NE	162.525	KEC39	300
NE	Gage	031067	Lincoln NE	162.475	WXM20	1000
NE	Gage	031067	Beatrice NE	162.450	KZZ69	300
NE	Garden	031069	Scottsbluff NE	162.475	WXL67	1000
NE	Garden	031069	Sidney NE	162.500	WXN61	1000
NE	Garden	031069	Oshkosh NE	162.525	KHA55	1000
NE	Garfield	031071	Bassett NE	162.475	WXL73	630
NE	Garfield	031071	Ord NE	162.525	KWN62	1000
NE	Gosper	031073	Holdrege NE	162.475	WXL75	1000
NE	Gosper	031073	Lexington NE	162.450	KGG99	300
NE	Gosper	031073	Cambridge NE	162.525	KEC39	300
NE	Grant	031075	--No NWR Coverage--			
NE	Greeley	031077	Grand Island NE	162.400	WXL74	1000
NE	Greeley	031077	Ord NE	162.525	KWN62	1000
NE	Hall	031079	Grand Island NE	162.400	WXL74	1000
NE	Hamilton	031081	Grand Island NE	162.400	WXL74	1000
NE	Harlan	031083	Holdrege NE	162.475	WXL75	1000
NE	Harlan	031083	Kirwin KS	162.500	KWN59	1000
NE	Hayes	031085	North Platte NE	162.550	WXL68	1000
NE	Hayes	031085	Trenton NE	162.500	WNG524	300
NE	Hitchcock	031087	Trenton NE	162.500	WNG524	300
NE	Holt	031089	Bassett NE	162.475	WXL73	630
NE	Holt	031089	Pickstown SD	162.425	KXI25	300
NE	Hooker	031091	--No NWR Coverage--			
NE	Howard	031093	Grand Island NE	162.400	WXL74	1000
NE	Howard	031093	Ord NE	162.525	KWN62	1000
NE	Jefferson	031095	Beatrice NE	162.450	KZZ69	300
NE	Johnson	031097	Lincoln NE	162.475	WXM20	1000
NE	Johnson	031097	Shubert NE	162.500	KWN41	1000
NE	Kearney	031099	Holdrege NE	162.475	WXL75	1000
NE	Keith	031101	North Platte NE	162.550	WXL68	1000
NE	Keith	031101	Oshkosh NE	162.525	KHA55	1000
NE	Keya Paha	031103	Bassett NE	162.475	WXL73	630
NE	Kimball	031105	Scottsbluff NE	162.475	WXL67	1000
NE	Kimball	031105	Sidney NE	162.500	WXN61	1000
NE	Knox	031107	Norfolk NE	162.550	WXL77	800
NE	Knox	031107	Yankton SD	162.500	KXI21	1000
NE	Lancaster	031109	Lincoln NE	162.475	WXM20	1000
NE	Lincoln	031111	North Platte NE	162.550	WXL68	1000
NE	Logan	031113	North Platte NE	162.550	WXL68	1000
NE	Loup	031115	Bassett NE	162.475	WXL73	630
NE	Loup	031115	Ord NE	162.525	KWN62	1000
NE	McPherson	031117	North Platte NE	162.550	WXL68	1000

W

NE	Madison	031119	Norfolk NE	162.550	WXL77	800	
NE	Merrick	031121	Grand Island NE	162.400	WXL74	1000	
NE	Merrick	031121	Columbus NE	162.450	WNG549	1000	
NE	Morrill	031123	Scottsbluff NE	162.475	WXL67	1000	
NE	Nance	031125	Grand Island NE	162.400	WXL74	1000	
NE	Nance	031125	Columbus NE	162.450	WNG549	1000	
NE	Nemaha	031127	Shubert NE	162.500	KWN41	1000	
NE	Nuckolls	031129	Grand Island NE	162.400	WXL74	1000	
NE	Nuckolls	031129	Superior NE	162.525	WNG578	1000	
NE	Otoe	031131	Lincoln NE	162.475	WXM20	1000	
NE	Otoe	031131	Shubert NE	162.500	KWN41	1000	
NE	Otoe	031131	Omaha NE	162.400	KIH61	1000	
NE	Pawnee	031133	Shubert NE	162.500	KWN41	1000	
NE	Perkins	031135	North Platte NE	162.550	WXL68	1000	
NE	Phelps	031137	Holdrege NE	162.475	WXL75	1000	
NE	Pierce	031139	Norfolk NE	162.550	WXL77	800	
NE	Platte	031141	Norfolk NE	162.550	WXL77	800	
NE	Platte	031141	Columbus NE	162.450	WNG549	1000	
NE	Polk	031143	Grand Island NE	162.400	WXL74	1000	
NE	Polk	031143	Columbus NE	162.450	WNG549	1000	
NE	Red Willow	031145	Trenton NE	162.500	WNG524	300	
NE	Red Willow	031145	Cambridge NE	162.525	KEC39	300	
NE	Richardson	031147	Shubert NE	162.500	KWN41	1000	
NE	Rock	031149	Bassett NE	162.475	WXL73	630	
NE	Saline	031151	Lincoln NE	162.475	WXM20	1000	
NE	Saline	031151	Beatrice NE	162.450	KZZ69	300	
NE	Sarpy	031153	Omaha NE	162.400	KIH61	1000	
NE	Saunders	031155	Lincoln NE	162.475	WXM20	1000	
NE	Saunders	031155	Omaha NE	162.400	KIH61	1000	
NE	Saunders	031155	Columbus NE	162.450	WNG549	1000	
NE	Scotts Bluff	031157	Scottsbluff NE	162.475	WXL67	1000	
NE	Seward	031159	Lincoln NE	162.475	WXM20	1000	
NE	Sheridan	031161	Merriman NE	162.400	WXL76	800	
NE	Sheridan	031161	Scottsbluff NE	162.475	WXL67	1000	S 1/2
NE	Sheridan	031161	Chadron NE	162.525	KXI20	1000	
NE	Sherman	031163	Grand Island NE	162.400	WXL74	1000	
NE	Sherman	031163	Ord NE	162.525	KWN62	1000	
NE	Sioux	031165	Scottsbluff NE	162.475	WXL67	1000	S 1/2
NE	Sioux	031165	Chadron NE	162.525	KXI20	1000	
NE	Stanton	031167	Norfolk NE	162.550	WXL77	800	
NE	Thayer	031169	Superior NE	162.525	WNG578	1000	
NE	Thomas	031171	--No NWR Coverage--				
NE	Thurston	031173	Sioux City IA	162.475	WXL62	1000	
NE	Valley	031175	Ord NE	162.525	KWN62	1000	
NE	Washington	031177	Omaha NE	162.400	KIH61	1000	
NE	Wayne	031179	Norfolk NE	162.550	WXL77	800	
NE	Webster	031181	Grand Island NE	162.400	WXL74	1000	
NE	Webster	031181	Superior NE	162.525	WNG578	1000	
NE	Wheeler	031183	Ord NE	162.525	KWN62	1000	
NE	Wheeler	031183	Bassett NE	162.475	WXL73	630	
NE	York	031185	Grand Island NE	162.400	WXL74	1000	

—

NEBRASKA MAIN LOCAL PRIMARY (LP-1) STATIONS

CITY	COUNTY	FIPS	CALL	FREQ
Alliance	Box Butte	31013	KCOW	1400
Alliance	Box Butte	31013	KAAQ (FM)	105.9
Ainsworth	Brown	31017	KBRB	1400
Ainsworth	Brown	31017	KBRB-FM	92.7
Broken Bow	Custer	31041	KCNI	1280
Broken Bow	Custer	31041	KBBN-FM	98.3
Chadron	Dawes	31045	KCSR	610
Chadron	Dawes	31045	KQSK-FM	97.5
Dakota City	Dakota	31043	KTFJ	1250
Grand Island	Hall	31079	KRGI	1430
Grand Island	Hall	31079	KRGI-FM	96.5
Grand Island	Hall	31079	KGIN-TV	Ch 11
Hastings	Adams	31001	KHAS	1230
Hastings	Adams	31001	KROR-FM	101.5
Hastings	Adams	31001	KHAS-TV	Ch 5
Kearney	Buffalo	31019	KHGI-TV	Ch 13
Kearney	Buffalo	31019	KGFW	1340
Kearney	Buffalo	31019	KQKY-FM	105.9
Lexington	Dawson	31047	KRVN	880
Lexington	Dawson	31047	KRVN-FM	93.1
Lincoln	Lancaster	31109	KFOR	1240
Lincoln	Lancaster	31109	KFRX-FM	102.7
Lincoln	Lancaster	31109	KOLN-TV	Ch 10
McCook	Red Willow	31145	KBRL	1300
McCook	Red Willow	31145	KIOD-FM	105.3
McCook	Red Willow	31145	KSNK-TV	Ch 8

Nebraska LP-1 Stations (continued)

CITY	COUNTY	FIPS	CALL	FREQ
Norfolk	Madison	31119	WJAG	780
Norfolk	Madison	31119	KEXL-FM	106.7
North Platte	Lincoln	31111	KODY	1240
North Platte	Lincoln	31111	KJLT-FM	94.9
North Platte	Lincoln	31111	KNOP-TV	Ch 2
O'Neill	Holt	31089	KBRX	1350
O'Neill	Holt	31089	KBRX-FM	102.9
Omaha	Douglas	31055	KFAB	1110
Omaha	Douglas	31055	KEFM	96.1
Omaha	Douglas	31055	KETV	Ch 7
Scottsbluff	Scotts Bluff	31157	KNEB	960
Scottsbluff	Scotts Bluff	31157	KNEB-FM	94.1
Scottsbluff	Scotts Bluff	31157	KDUH-TV	Ch 4
Sidney	Cheyenne	31033	KSID	1340
Sidney	Cheyenne	31033	KSID-FM	98.7
Valentine	Cherry	31031	KVSH	940
Valentine	Cherry	31031	KINI-FM	96.1
Westpoint	Cuming	31039	KTIC	840
Westpoint	Cuming	31039	KWPN-FM	107.9

## LOCAL AREAS

All stations will program their equipment to designate their county of license and each adjacent county in the stations coverage as their local primary area. Adjacent counties in adjoining states are also to be included as part of the Nebraska local area. Stations may at their option program other counties in their primary coverage area as part of their local area.

## OPERATIONAL AREAS

The state of Nebraska has been subdivided into 5 EAS Operational Areas. Subdivision is required to limit statewide activation for regional emergencies.

There is a list of EAS Counties by Regional Area starting on Page 11 of this plan.

## WEEKLY EAS TESTS

All stations are required to perform and log a weekly EAS test at random times to confirm equipment operation. Origination or relay and logging of any EAS message during a week may be considered a valid weekly test.

## MONTHLY TESTS OF THE EAS HEADER CODES, ATTENTION SIGNAL, TEST SCRIPT AND EOM CODE.

All EAS transmissions require use of FCC approved EAS encoders and decoders. The old EBS two-tone attention signal has been eliminated for inter-station signaling but is retained as an attention signal for the general public.

Effective January 1, 1997, all AM, FM and TV stations; and, effective October 1, 2002, all cable systems must confirm reception and relay of a Required Monthly Test (RMT). Tests times and dates will be published in Annex B which will be updated yearly. A Monthly test must be transmitted within 60 minutes of receipt by all broadcast stations and cable systems. An actual received and relayed State or local EAS emergency activation may be used in place of a required monthly test (RMT). Stations not operating when an RMT is received must log the receipt of the RMT and run an RWT sometime during that week.



## REQUIRED MONTHLY TEST PROCEEDURE

Stations and cable systems using automatic interrupt must perform the following steps automatically.

1. Discontinue normal programming
  
2. Transmit an opening announcement before test time

Example of an opening announcement:

=====  
"The following is a test of the Emergency Alert System"  
=====

Note: TV stations shall transmit all announcements visually and aurally in the manner required by 11.51 and 73.1250(h). Cable system transmissions of EAS announcements may be made in the language as the primary language of the station.

3. Transmit the monthly test EAS header codes, Attention Signal, and test script  
The EAS header code for a required monthly test is ~RMT~ for the event and the appropriate location codes for the State and EAS Local Area. Example test messages are available from the FCC.

Note: If the monthly test is an EAS Local Area test, Local Primary sources will originate the test message with only the location codes for the counties in their EAS Local Area as defined by the local areas on page 5. If the monthly test is a State test, State Primary sources will originate the test message with only the location code for their State.

Example of a test script:

=====  
This is a monthly coordinated test of the broadcast stations and cable systems of your area. Equipment that can quickly warn you during emergencies is being tested. If this had been an actual emergency such as tornado or flood, official messages would have followed the alert tone. The Nebraska EAS System serves the State of Nebraska area. This concludes this test of the Emergency Alert System.  
=====

## Required Monthly Test Procedures (continued)

Note: TV stations shall transmit all announcements visually and aurally in the manner required by 11.51 and 73.1250(h). Subject cable systems shall transmit all EAS announcements in the manner required by 11.51. Announcements may be made in the same language as the primary language of the station.

4. Transmit the EAS End of Message (EOM) Code
5. Resume regular programming
6. Record time test received or transmitted in records/logs
7. Failure to receive the Required Monthly Test.

If you do not receive the above test or activation from the sources you are assigned to monitor each month, you must determine why and make notations in your records or logs and take corrective action. Your EAS monitoring assignments are provided in this State EAS Plan.

### **STATE LEVEL ACTIVATION AUTHORIZATION**

The following individuals or their representative are authorized to initiate a State Level Activation of the Nebraska EAS System.

1. Governor  
Lt. Governor (1st Alternate)  
Speaker of the Legislature (2nd Alternate)
2. Nebraska Emergency Management Director  
Assistant Nebraska Emergency Management Director (1<sup>st</sup> Alternate)  
Nebraska Emergency Management Operations officer (2<sup>nd</sup> Alternate)
3. Meteorologist-In-Charge, National Weather Service, Omaha

## **AMBER CHILD ABDUCTION ALERT**

The Nebraska EAS system will support the State AMBER alert system. The AMBER system will utilize the NWS NOAA transmitters in disseminating the AMBER alert information. All Nebraska Broadcast stations and cable systems are required to monitor their local NOAA transmitter

See Annex 'A' for a copy of the State of Nebraska AMBER Alert plan Overview and Memorandum of Understanding between Nebraska Law Enforcement, Nebraska Broadcasters and Nebraska AMBER Plan Committee.

### **EAS Counties By Regional Area**

#### **AREA 1    South East                    (28 counties)**

Nance	Saunders	Otoe	Jefferson
Platte	Douglas	Clay	Gage
Colfax	Sarpy	Fillmore	Pawnee
Dodge	Hamilton	Saline	Richardson
Washington	York	Johnson	
Merrick	Seward	Nemaha	
Polk	Lancaster	Nuckolls	
Butler	Cass	Thayer	

#### **AREA 2    South West                    (23 counties)**

McPherson	Howard	Frontier	Red Willow
Logan	Dawson	Gosper	Furnas
Custer	Lincoln	Phelps	Harlan
Valley	Buffalo	Kearney	Franklin
Greeley	Hall	Adams	Webster
Sherman	Hayes	Hitchcock	

#### **AREA 3    North East                    (13 counties)**

Knox	Antelope	Madison	Boone
Cedar	Pierce	Stanton	
Dixon	Wayne	Cuming	
Dakota	Thurston	Burt	

**AREA 4 North West (10 1/3 counties)**

Eastern Cherry (1/3)	Brown	Thomas	Garfield
Keya Paha	Rock	Blaine	Wheeler
Boyd	Holt	Loup	

**AREA 5 Far West (18 2/3 counties) (Mountain Time)**

Western Cherry (2/3)	Scotts Bluff	Arthur	Keith
Sioux	Morrill	Banner	Perkins
Dawes	Garden	Kimball	Chase
Sheridan	Grant	Cheyenne	Dundy
Box Butte	Hooker	Deuel	

## NEBRASKA STATION LISTING

CITY	COUNTY	AREA	EAS CLASS	CALL SIGN	FCC CLASS	FREQ	FACILITIES
Hastings	Adams	2		KICS	AM	1550	500w D/27w N
Hastings	Adams	2	LP-I	KHAS	AM	1230	1kw U
Hastings	Adams	2	LP-I	KROR	FM	101.5	100kw@306m
Hastings	Adams	2		KCNT*	FM	88.1	2.3kw@55m
Hastings	Adams	2	SR	KHNE-FM*	FM	89.1	64kw@329m
Hastings	Adams	2	LP-I	KHAS-TV	TV	Ch 05	100kw@223m
Hastings	Adams	2	SR	KHNE-TV*	TV	Ch 29	1550kw@372m
Hastings	Adams	2		KFKX*	FM	90.1	1kwU
	<i>Adams</i>	2		<i>Coordinated by SBE Chapter 87</i>			
Orchard	Antelope	3		KGRD*	FM	105.3	100kw@153m
	<i>Antelope</i>			<i>Coordinated by SBE Chapter 74</i>			
	<i>Boone</i>			<i>Coordinated by SBE Chapter 74</i>			
Alliance	Box Butte	5	LP- I	KCOW	AM	1400	1kw U
Alliance	Box Butte	5	LP- I	KAAQ	FM	105.9	100kw@215m
Alliance	Box Butte	5		KPNY	FM	102.1	100kw@159m
Alliance	Box Butte	5	SR	KTNE-FM*	FM	91.1	92kw@404m
Alliance	Box Butte	5	SR	KTNE-TV*	TV	Ch 13	316kw@49m
	<i>Box Butte</i>	5		<i>Coordinated by SBE Chapter 87</i>			
	<i>Boyd</i>	4		<i>Coordinated by SBE Chapter 87</i>			
Ainsworth	Brown	4	LP- I	KBRB	AM	1400	1kw U
Ainsworth	Brown	4	LP- I	KBRB-FM	FM	92.7	4.5kw@101m
Bassett	Brown	4	SR	KMNE-FM*	FM	90.3	92kw@394m
Bassett	Brown	4	SR	KMNE-TV*	TV	Ch 07	316kw@453m
	<i>Brown</i>	4		<i>Coordinated by SBE Chapter 87</i>			
Kearney	Buffalo	2		KXPB	AM	1460	5kwD,56wN
Kearney	Buffalo	2	LP- I	KGFW	AM	1340	1kw U
Kearney	Buffalo	2		KLPR*	FM	91.3	1kw@37m
Kearney	Buffalo	2		KKPR-FM	FM	98.9	100kw@191m
Kearney	Buffalo	2	LP- I	KQKY	FM	105.9	98kw@308m
Kearney	Buffalo	2		KRNY	FM	102.3	77.1kw@331m
Kearney	Buffalo	2	LP- I	KHGI-TV	TV	Ch13	316kw@592m
Shelton	Buffalo	2		KPVA-LP	FM	92.7	.1kw@25.6m
	<i>Buffalo</i>	2		<i>Coordinated by SBE Chapter 87</i>			
Plattsmouth	Cass	1		KOIL	AM	1020	50kwD,1.4kwN
Plattsmouth	Cass	1		KOPW	FM	106.9	25kw@100m
	<i>Cass</i>	1		<i>Coordinated by SBE Chapter 74</i>			

	<i>Chase</i>	5		<i>Coordinated by SBE Chapter 87</i>			
Crookston	Cherry	4	LP- I	KINI*	FM	96.1	90kw@152m
Merriman	Cherry	5	SR	KRNE-FM*	FM	91.5	92kw@294m
Merriman	Cherry	5	SR	KRNE-TV*	TV	Ch 12	316kw@328m
Valentine	Cherry	4	LP- I	KVSH	AM	940	5kwD,19wN
	<i>Cherry</i>	4		<i>Coordinated by SBE Chapter 87</i>			
Sidney	Cheyenne	5	LP- I	KSID	AM	1340	1kwU
Sidney	Cheyenne	5	LP- I	KSID-FM	FM	98.7	62kw@113m
	<i>Cheyenne</i>	5		<i>Coordinated by SBE Chapter 87</i>			
West Point	Cuming	3	LP- I	KTIC	AM	840	5kw D
West Point	Curning	3	LP- I	KWPN-FM	FM	107.9	50kw@97m
	<i>Cuming</i>	3		<i>Coordinated by SBE Chapter 74</i>			
Broken Bow	Custer	2	LP- I	KCNI	AM	1280	1kw D
Broken Bow	Custer	2	LP-1	KBBN-FM	FM	98.3	25kw@174.9m
Callaway	Custer	2		KAWA-LP	FM	102.7	.1kw@-15m
	<i>Custer</i>	2		<i>Coordinated by SBE Chapter 87</i>			
Dakota City	Dakota	3	LP- I	KTFJ	AM	1250	500wD,700wN
S. Sioux City	Dakota	3		KSFT-FM	FM	107.1	2.3kw@100m
	<i>Dakota</i>	3		<i>Coordinated by SBE Chapter 74</i>			
Chadron	Dawes	5	LP- I	KCSR	AM	610	1kwD,118w N
Chadron	Dawes	5	LP- I	KQSK	FM	97.5	100kw@256m
Chadron	Dawes	5	SR	KCNE-FM*	FM	91.9	8.4kw@103m
	<i>Dawes</i>	5		<i>Coordinated by SBE Chapter 87</i>			
Cozad	Dawson	2		KAMI	AM	1580	1kw D, 17w N
Cozad	Dawson	2		KCVN	FM	104.5	100kw@300.3m
Lexington	Dawson	2	LP- I	KRVN	AM	880	50kwU,DA-N
Lexington	Dawson	2	LP- I	KRVN-FM	FM	93.1	100kw@271.2m
Lexington	Dawson	2	SR	KLNE-FM*	FM	88.7	92kw@286m
Lexington	Dawson	2	SR	KLNE-TV*	TV	Ch 03	100kw@323m
Overton	Dawson	2		KHZY-FM	FM	99.3	100kw@229m
	<i>Dawson</i>	2		<i>Coordinated by SBE Chapter 87</i>			
Fremont	Dodge	1		KHUB	AM	1340	500wD,250wN
Fremont	Dodge	1		KFMT	FM	105.5	1.2kw@137m
	<i>Dodge</i>	1		<i>Coordinated by SBE Chapter 74</i>			
Bennington	Douglas	1		KHUS	FM	93.3	9.6kw@130m
Omaha	Douglas	1		KOMJ	AM	1490	1kw U
Omaha	Douglas	1	LP- I	KFAB	AM	1110	50kwU,DA-N
Omaha	Douglas	1		KKAR	AM	1290	5kwD,5kwN

Omaha	Douglas	1		KCRO	AM	660	1kwD, 54wN
Omaha	Douglas	1		KXSP	AM	590	5kw U
Omaha	Douglas	1		KOTK	AM	1420	1kwD,330wN
Omaha	Douglas	1		KEZO	FM	92.3	97kw@360.9m
Omaha	Douglas	1		KIOS*	FM	91.5	55kw@169m
Omaha	Douglas	1		KGOR	FM	99.9	110kw@370m
Omaha	Douglas	1		KKCD	FM	105.9	50kw@146m
Omaha	Douglas	1		KGBI*	FM	100.7	100kw@309m
Omaha	Douglas	1	SR	KVNO*	FM	90.7	8.9kw@197m
Omaha	Douglas	1	LP- I	KQBW	FM	96.1	82kw@331m
Omaha	Douglas	1		KQCH	FM	94.1	100kw@361m
Omaha	Douglas	1		KSRZ	FM	104.5	100kw@331m
Omaha	Douglas	1		KXKT	FM	103.7	17kw@280m
Omaha	Douglas	1		KVSS	FM	88.9	1.5kw@147m
Omaha	Douglas	1	LP- I	KETV	TV	Ch 07	316kw@415m
Omaha	Douglas	1		KMTV	TV	Ch 03	100kw@418m
Omaha	Douglas	1		WOWT	TV	Ch 06	100kw@481m
Omaha	Douglas	1	SR	KYNE*	TV	Ch 26	525kw@130m
Omaha	Douglas	1		KPTM	TV	Ch 42	5000kw@577m
Omaha	Douglas	1		KXVO	TV	Ch15	5000kw@577m
Omaha	Douglas	1		KAZO-LP	TV	Ch 57	100kw@447.8m
Omaha	Douglas	1		KOHP-LP	TV	48	150kw@500m
Ralston	Douglas	1		KMLV	FM	88.1	45kw@369m
	Douglas	1		<i>Coordinated by SBE Chapter 74</i>			
	Deuel	5		<i>Coordinated by SBE Chapter 87</i>			
	Dundy	5		<i>Coordinated by SBE Chapter 87</i>			
	Franklin	2		<i>Coordinated by SBE Chapter 87</i>			
	Frontier	2		<i>Coordinated by SBE Chapter 87</i>			
	Furnas	2		<i>Coordinated by SBE Chapter 87</i>			
Beatrice	Gage	1		KWBE	AM	1450	530w U
	Gage	1		<i>Coordinated by SBE Chapter 74</i>			
	Garfield	4		<i>Coordinated by SBE Chapter 87</i>			
	Gosper	2		<i>Coordinated by SBE Chapter 87</i>			
	Grant	5		<i>Coordinated by SBE Chapter 87</i>			
	Greeley	2		<i>Coordinated by SBE Chapter 87</i>			
Grand Island	Hall	2	LP- I	KRGI	AM	1430	5kwD,1kwNDA
Grand Island	Hall	2		KMMJ	AM	750	10kwL DA-1
Grand Island	Hall	2		KROA	FM	95.7	100kw@140m

Grand Island	Hall	2	LP- I	KRGI-FM	FM	96.5	100kw@129m
Grand Island	Hall	2		KSYZ-FM	FM	107.7	100kw@273m
Grand Island	Hall	2		KGIA-LP	FM	92.9	.1kw@29.5m
Grand Island	Hall	2		KTVG	TV	Ch 17	5000kw@590m
Grand Island	Hall	2	LP- I	KGIN	TV	Ch 11	316kw@308m
	<i>Hall</i>	2		<i>Coordinated by SBE Chapter 87</i>			
Aurora	Hamilton	1		KRGY	FM	97.3	50kw@106m
Aurora	Hamilton	1		KIVE-LP	FM	92.5	.1kw@6.8m
	<i>Hamilton</i>	1		<i>Coordinated by SBE Chapter 74</i>			
	<i>Harlan</i>	2		<i>Coordinated by SBE Chapter 87</i>			
Hayes Center	Hayes	2		KWNB-TV	TV	Ch 06	100kw@216m
	<i>Hayes</i>	2		<i>Coordinated by SBE Chapter 87</i>			
	<i>Hitchcock</i>	2		<i>Coordinated by SBE Chapter 87</i>			
O'Neill	Holt	4	LP- I	KBRX	AM	1350	1kw D, 44wN
O'Neill	Holt	4	LP- I	KBRX-FM	FM	102.9	100kw@131m
	<i>Holt</i>	4		<i>Coordinated by SBE Chapter 87</i>			
	<i>Hooker</i>	5		<i>Coordinated by SBE Chapter 87</i>			
	<i>Howard</i>	2		<i>Coordinated by SBE Chapter 87</i>			
Fairbury	Jefferson	1		KGMT	AM	1310	500wD,95wN
Fairbury	Jefferson	1		KUTT	FM	99.5	100kw@211m
	<i>Jefferson</i>	1		<i>Coordinated by SBE Chapter 74</i>			
	<i>Kearney</i>	2		<i>Coordinated by SBE Chapter 87</i>			
Ogallala	Keith	5		KOGA	AM	930	5kwD,500wN
Ogallala	Keith	5		KOGA-FM	FM	99.7	100kw@245m
Ogallala	Keith	5		KMCX	FM	106.5	100kw@96m
	<i>Keith</i>	5		<i>Coordinated by SBE Chapter 87</i>			
	<i>Keya Paha</i>	4		<i>Coordinated by SBE Chapter 87</i>			
Kimball	Kimball	5		KIMB	AM	1260	1kwD,112wN
	<i>Kimball</i>	5		<i>Coordinated by SBE Chapter 87</i>			
Lincoln	Lancaster	1	LP- I	KFOR	AM	1240	1kw U
Lincoln	Lancaster	1		KLMS	AM	1480	1kwD,750wN
Lincoln	Lancaster	1		KLIN	AM	1400	1kw U
Lincoln	Lancaster	1		KFRX	FM	106.3	100kw@214m
Lincoln	Lancaster	1		KRKR	FM	95.1	50kw@87m
Lincoln	Lancaster	1		KTGL	FM	92.9	100kw@247m



Lincoln	Lancaster	1	LP- I	KBZR	FM	102.7	100kw@131m
Lincoln	Lancaster	1		KLCV*	FM	88.5	4.7kw@94m
Lincoln	Lancaster	1		KLTV	FM	101.9	96.4kw@365m
Lincoln	Lancaster	1		KRNU*	FM	90.3	100w@38m
Lincoln	Lancaster	1	SR	KUCV*	FM	91.1	15kw@219m
Lincoln	Lancaster	1		KZUM	FM	89.3	1.5kw@31m
Lincoln	Lancaster	1		KBBK	FM	107.3	100kw@168m
Lincoln	Lancaster	1		KLNC	FM	105.3	3.2kw@138m
Lincoln	Lancaster	1		KJFT-LP	FM	93.7	.1kw@-9m
Lincoln	Lancaster	1		KLKN	TV	Ch 08	316kw@610m
Lincoln	Lancaster	1	LP-1	KOLN-TV	TV	Ch 10	316kw@454m
Lincoln	Lancaster	1	SP	KUON-TV*	TV	Ch 12	316kw@253m
Lincoln	Lancaster	1		KCWL-TV	TV	Ch 51	51.4kw@125m
	<i>Lancaster</i>	<i>1</i>		<i>Coordinated by SBE Chapter 74</i>			
North Platte	Lincoln	2		KOOQ	AM	1410	5kwD,500wNDA
North Platte	Lincoln	2		KJLT*	AM	970	5kwD,55wN
North Platte	Lincoln	2	LP- I	KODY	AM	1240	1kw U
North Platte	Lincoln	2		KELN	FM	97.1	100kw@140m
North Platte	Lincoln	2	LP- I	KJLT-FM	FM	94.9	100kw@230m
North Platte	Lincoln	2		KXNP	FM	103.5	100kw@146m
North Platte	Lincoln	2	SR	KPNE-FM*	FM	91.7	81kw@257m
North Platte	Lincoln	2	LP- I	KNOP-TV	TV	Ch 02	100kw@192m
North Platte	Lincoln	2	SR	KPNE-TV*	TV	Ch 09	316kw@311m
North Platte	Lincoln	2		KMBB-LP	TV	Ch 30	.167kw@32m
	<i>Lincoln</i>	<i>2</i>		<i>Coordinated by SBE Chapter 87</i>			
	<i>Logan</i>	<i>2</i>		<i>Coordinated by SBE Chapter 87</i>			
	<i>Loup</i>	<i>4</i>		<i>Coordinated by SBE Chapter 87</i>			
Norfolk	Madison	3	LP- I	WJAG	AM	780	1kwL
Norfolk	Madison	3		KNEN	FM	94.7	100kw@162m
Norfolk	Madison	3		KPNO*	FM	90.9	50kw @ 107m
Norfolk	Madison	3	SR	KXNE-FM*	FM	89.3	45kw @ 300m
Norfolk	Madison	3	LP- I	KEXL	FM	106.7	100kw@313m
Norfolk	Madison	3	SR	KXNE-TV*	TV	Ch 19	1700kw@348m
	<i>Madison</i>	<i>3</i>		<i>Coordinated by SBE Chapter 74</i>			
	<i>McPherson</i>	<i>2</i>		<i>Coordinated by SBE Chapter 87</i>			
Central City	Merrick	1		KZEN	FM	100.3	100kw@562m
	<i>Merrick</i>	<i>1</i>		<i>Coordinated by SBE Chapter 74</i>			
	<i>Morrill</i>	<i>5</i>		<i>Coordinated by SBE Chapter 87</i>			
Auburn	Nemaha	1		KNCY	FM	103.1	14kw@133m
	<i>Nemaha</i>	<i>1</i>		<i>Coordinated by SBE Chapter 74</i>			

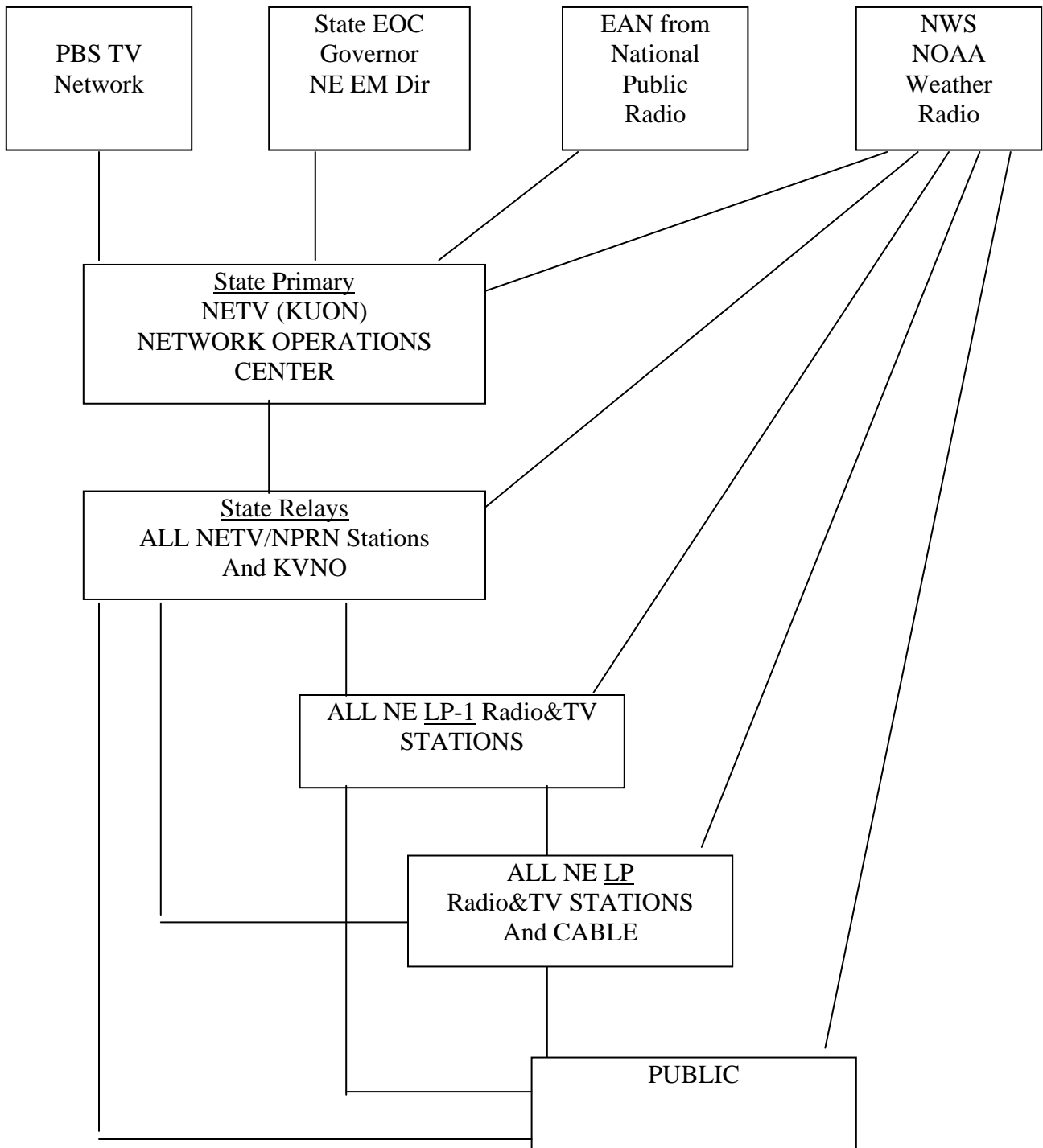
Superior	Nuckolls	1		KRFS	AM	1600	500wD,44wN
Superior	Nuckolls	1		KRFS-FM	FM	103.9	6kw @ 67m
Superior	Nuckolls	1		KSNB-TV	TV	Ch 04	100kw@344m
	<i>Nuckolls</i>	<i>1</i>		<i>Coordinated by SBE Chapter 74</i>			
Nebraska City	Otoe	1		KNCY	AM	1600	500wD,31wN
Nebraska City	Otoe	1		KBBX	FM	97.7	99kw@299m
	<i>Otoe</i>	<i>1</i>		<i>Coordinated by SBE Chapter 74</i>			
	<i>Perkins</i>	<i>5</i>		<i>Coordinated by SBE Chapter 87</i>			
Holdrege	Phelps	2		KUVR	AM	1380	500wD,62wN
Holdrege	Phelps	2		KMTY	FM	97.7	55kw@80m
	<i>Phelps</i>	<i>2</i>		<i>Coordinated by SBE Chapter 87</i>			
Columbus	Platte	1		KTTT	AM	1510	500w D
Columbus	Platte	1		KJSK	AM	900	1kwD,65wN
Columbus	Platte	1		KKOT	FM	93.5	100kw@299m
Columbus	Platte	1		KLIR	FM	101.1	100kw@232m
Columbus	Platte	1		KTLX*	FM	91.9	100w@16m
	<i>Platte</i>	<i>1</i>		<i>Coordinated by SBE Chapter 74</i>			
McCook	Red Willow	2	LP- I	KBRL	AM	1300	5kwDA,136N
McCook	Red Willow	2		KNGN*	AM	1360	1kw D
McCook	Red Willow	2		KICX	FM	96.1	3.1kw@115m
McCook	Red Willow	2	LP- I	KIOD	FM	105.3	100kw@180m
McCook	Red Willow	2		KRKU	FM	98.5	55kw@110m
McCook	Red Willow	2		KZMC	FM	102.1	100kw@180m
McCook	Red Willow	2	LP- I	KSNK	TV	Ch 08	295kw@216m
	<i>Red Willow</i>	<i>2</i>		<i>Coordinated by SBE Chapter 87</i>			
Falls City	Richardson	1		KTNC	AM	1230	500wD,1kwN
	<i>Richardson</i>	<i>1</i>		<i>Coordinated by SBE Chapter 74</i>			
	<i>Rock</i>	<i>4</i>		<i>Coordinated by SBE Chapter 87</i>			
Crete	Saline	1		KIBZ	FM	104.1	39kw@113m
Crete	Saline	1		KDNE	FM	91.9	200w@20m
Wilber	Saline	1		KFLV*	FM	89.9	5.8kw@157m
	<i>Saline</i>	<i>1</i>		<i>Coordinated by SBE Chapter 74</i>			
Bellevue	Sarpy	1		KOZN	AM	1620	10kwD, 1kwN
Bellevue	Sarpy	1		KYDZ	AM	1180	25kwD,1kwNDA-2
	<i>Sarpy</i>	<i>1</i>		<i>Coordinated by SBE Chapter 74</i>			
Scottsbluff	Scotts Bluff	5	LP- I	KNEB	AM	960	5kwD,350wNDA

Scottsbluff	Scotts Bluff	5		KOLT	AM	1320	5kwD,1kwNDA
Scottsbluff	Scotts Bluff	5		KMOR	FM	92.9	100kw@311m
Scottsbluff	Scotts Bluff	5	LP- I	KNEB-FM	FM	94.1	100kw@207m
Scottsbluff	Scotts Bluff	5		KNIF-LP	FM	107.9	.1kw@-18m
Scottsbluff	Scotts Bluff	5	LP- I	KDUH-TV	TV	Ch 04	100kw@610m
Scottsbluff	Scotts Bluff	5		KSTF	TV	Ch 10	240kw@256m
Terrytown	Scotts Bluff	5		KOAQ	AM	690	1kwD,65wN
Terrytown	Scotts Bluff	5		KCMI	FM	96.9	100kw@211m
	<i>Scotts Bluff</i>	<i>5</i>		<i>Coordinated by SBE Chapter 87</i>			
Milford	Seward	1		KFGE	FM	98.1	100kw@299m
Seward	Seward	1		KZKX	FM	96.9	100kw@177m
	<i>Seward</i>	<i>1</i>		<i>Coordinated by SBE Chapter 74</i>			
Gordon	Sheridan	5		KSDZ	FM	95.5	60kw@95m
	<i>Sheridan</i>	<i>5</i>		<i>Coordinated by SBE Chapter 87</i>			
	<i>Sherman</i>	<i>2</i>		<i>Coordinated by SBE Chapter 87</i>			
	<i>Sioux</i>	<i>5</i>		<i>Coordinated by SBE Chapter 87</i>			
	<i>Thayer</i>	<i>1</i>		<i>Coordinated by SBE Chapter 74</i>			
Winnebago	Thurston	3		KSUX	FM	105.7	50kw@141m
	<i>Thurston</i>	<i>3</i>		<i>Coordinated by SBE Chapter 74</i>			
Ord	Valley	2		KNLV	AM	1060	1kw D
Ord	Valley	2		KNLV-FM	FM	103.9	4.7kw@115m
	<i>Valley</i>	<i>2</i>		<i>Coordinated by SBE Chapter 87</i>			
Blair	Washington	1		KBLR	FM	97.3	25kw@92m
Blair	Washington	1		KDCV-FM*	FM	91.1	6w@27m
	<i>Washington</i>	<i>1</i>		<i>Coordinated by SBE Chapter 74</i>			
Wayne	Wayne	3		KTCH	AM	1590	2.5kwD,47wN
Wayne	Wayne	3		KTCH-FM	FM	104.9	25kw@92m
Wayne	Wayne	3		KWSC*	FM	91.9	320w @29m
	<i>Wayne</i>	<i>3</i>		<i>Coordinated by SBE Chapter 74</i>			
	<i>Webster</i>	<i>2</i>		<i>Coordinated by SBE Chapter 87</i>			
	<i>Wheeler</i>	<i>4</i>		<i>Coordinated by SBE Chapter 87</i>			
York	York	1		KAWL	AM	1370	500wD,176wN
York	York	1		KTMX	FM	104.9	25kw@100m
	<i>York</i>	<i>1</i>		<i>Coordinated by SBE Chapter 74</i>			

\* Indicates Educational station

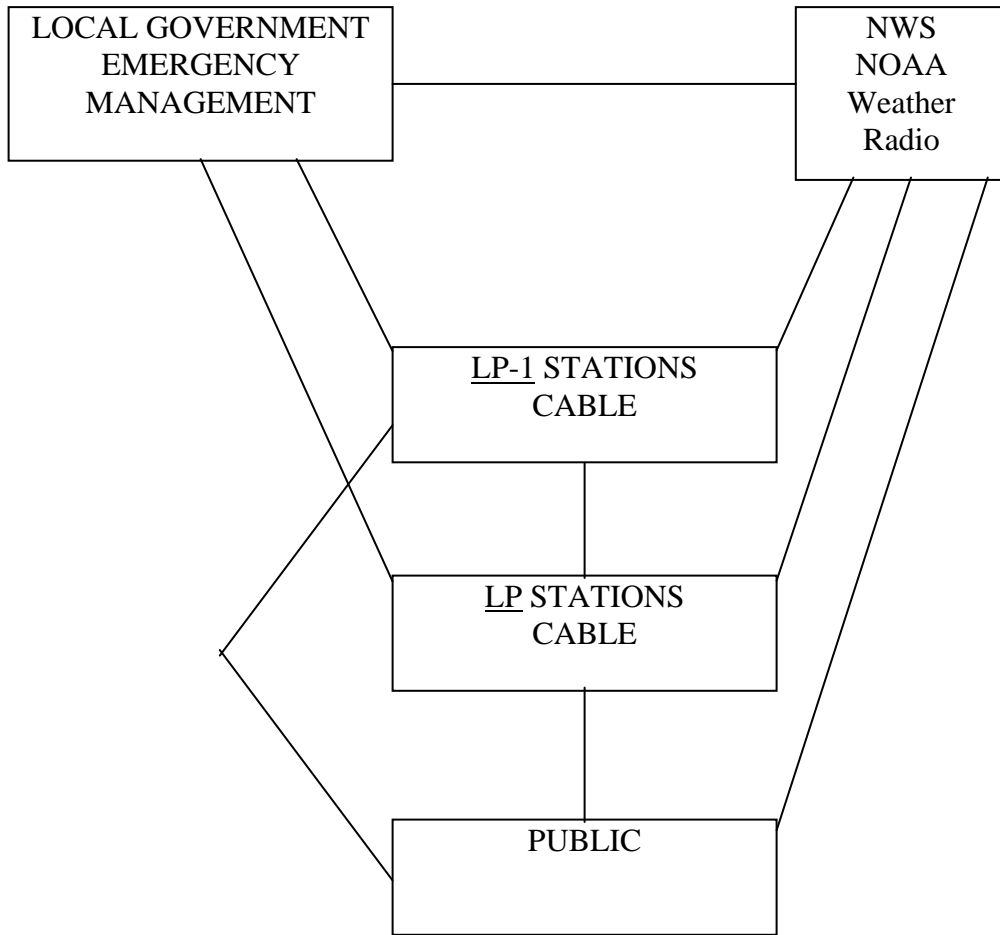


# NEBRASKA EAS NETWORK



8/1/07

*NEBRASKA LOCAL EAS*



## Emergency Alert System (EAS) Event Codes/ NWR Specific Area Message Encoding (NWR-SAME) Codes

The [Federal Communications Commission](#) issued a [Report and Order \(R&O\)](#), effective May 16, 2002, amending the [EAS](#) rules. The change included adding numerous new civil emergency, weather and natural disaster event codes and NWS [marine area location codes](#).

The complete list of EAS event codes (also known as NWR-SAME Codes) is shown below. The chart below is divided into two groups: Codes in use before and after June 30, 2004. NWR and the EAS use identical digital protocols. NWS used Weather Radio as its primary means to activate EAS.

Codes shown below as **Operational** were implemented on June 30, 2004. Older SAME-enabled receivers may display them as unknown codes, although they should still play the audio. Check your receiver's manual or the [manufacturer's website](#) for more information. If you do not receive the new codes, you may want to consider buying a newer model. You will continue to receive the event codes in effect before June 30, 2004.

<b>EAS Event (NWR-SAME) Codes</b>		
<b>Weather-Related Events</b>	<b>NWR-SAME Code</b>	<b>Status</b>
Blizzard Warning	BZW	Operational
Coastal Flood Watch	CFA	* Operational *
Coastal Flood Warning	CFW	* Operational *
Dust Storm Warning	DSW	* Operational *
Flash Flood Watch	FFA	Operational
Flash Flood Warning	FFW	Operational
Flash Flood Statement	FFS	Operational
Flood Watch	FLA	Operational
Flood Warning	FLW	Operational
Flood Statement	FLS	Operational
High Wind Watch	HWA	Operational
High Wind Warning	HWW	Operational
Hurricane Watch	HUA	Operational
Hurricane Warning	HUW	Operational
Hurricane Statement	HLS	Operational
Severe Thunderstorm Watch	SVA	Operational
Severe Thunderstorm Warning	SVR	Operational
Severe Weather Statement	SVS	Operational
Special Marine Warning	SMW	* Operational *
Special Weather Statement	SPS	Operational

Tornado Watch	TOA	Operational
Tornado Warning	TOR	Operational
Tropical Storm Watch	TRA	* Operational *
Tropical Storm Warning	TRW	* Operational *
Tsunami Watch	TSA	Operational
Tsunami Warning	TSW	Operational
Winter Storm Watch	WSA	Operational
Winter Storm Warning	WSW	Operational
<b>Non-Weather-Related Events</b>		
<b>NWR-SAME Code</b>		
<b>Status</b>		
<i>National Codes-Required</i>		
Emergency Action Notification	EAN	Not currently implemented on NWR
Emergency Action Termination	EAT	Not currently implemented on NWR
National Information Center	NIC	Operational
<i>State and Local Codes-Optional</i>		
Avalanche Watch	AVA	* Operational *
Avalanche Warning	AVW	* Operational *
Child Abduction Emergency	CAE	* Operational *
Civil Danger Warning	CDW	* Operational *
Civil Emergency Message	CEM	Operational
Earthquake Warning	EQW	* Operational *
Evacuation Immediate	EVI	Operational
Fire Warning	FRW	* Operational *
Hazardous Materials Warning	HMW	* Operational *
Law Enforcement Warning	LEW	* Operational *
Local Area Emergency	LAE	* Operational *
911 Telephone Outage Emergency	TOE	* Operational *
Nuclear Power Plant Warning	NUW	* Operational *
Radiological Hazard Warning	RHW	* Operational *
Shelter in Place Warning	SPW	* Operational *
Volcano Warning	VOW	* Operational *
<b>Administrative Events</b>		
<b>NWR-SAME Code</b>		
<b>Status</b>		
Administrative Message	ADR	Operational
National Periodic Test	NPT	Not currently implemented on NWR



Network Message Notification	NMN	Not currently implemented on NWR
Practice/Demo Warning	DMO	Operational
Required Monthly Test	RMT	Operational
Required Weekly Test	RWT	Operational

### Naming Convention for EAS Event Codes

The FCC Report and Order which became effective May 16, 2002, established naming conventions for EAS event codes. In most cases, and for all future codes to be approved, the third letter of all hazardous state and local event codes is limited to one of four letters:

- "W" for **WARNINGS**
- "A" for **WATCHES**
- "E" for **EMERGENCIES**
- "S" for **STATEMENTS**

**Note:** The existing event codes for Tornado Warning (TOR), Severe Thunderstorm Warning (SVR) and Evacuation Immediate (EVI) *will not* be changed to conform to this naming convention.

- A **WARNING** is an event that alone poses a significant threat to public safety and/or property, probability of occurrence and location is high, and the onset time is relatively short.
- A **WATCH** meets the classification of a warning, but either the onset time, probability of occurrence, or location is uncertain.
- An **EMERGENCY** is an event that, by itself, would not kill or injure or do property damage, but indirectly may cause other things to happen that result in a hazard. For example, a major power or telephone loss in a large city alone is not a direct hazard, but disruption to other critical services could create a variety of conditions that could directly threaten public safety.
- A **STATEMENT** is a message containing follow up information to a warning, watch, or emergency.

This Document is prepared by the  
Nebraska State Emergency Communications Committee  
Vern Killion Chair  
Revised October 1, 2007

**Note to stations:**

Please send any corrections or updates for your particular data listing to:  
[Bob.Eastwood@nema.ne.gov](mailto:Bob.Eastwood@nema.ne.gov)  
for inclusion in the next plan update.

**For up to date EAS information all broadcasters are encouraged to join our  
Nebraska EAS mailing list. Send an e-mail to:  
[Bob.Eastwood@nema.ne.gov](mailto:Bob.Eastwood@nema.ne.gov) or [w0rje@yahoo.com](mailto:w0rje@yahoo.com) to join**

Copies are sent electronically or in print form to:  
Federal Communications Commission  
Nebraska Educational Telecommunications  
Radio, TV Stations and Cable systems throughout Nebraska  
Local Emergency Management agencies

**This document is available on the  
Nebraska Emergency Management Agency website:**

<http://www.nema.ne.gov>

Click on:  
NEMA Divisions  
Communications  
Nebraska EAS Plan or Communications Related Links  
Nebraska EAS Plan

# ANNEX “A”



## State of Nebraska AMBER Plan Overview

### Background

AMBER is an acronym for America’s Missing: Broadcast Emergency Response. The AMBER Plan is a cooperative effort between Nebraska law enforcement agencies, broadcasters, and the Nebraska AMBER Plan Committee for the response to the abduction of children. Because 75% of children who are murdered after being abducted by strangers are murdered within the first three hours after an abduction, the AMBER plan calls for law enforcement agencies to provide radio and television stations with an immediate alert upon the confirmation of a child abduction. All participating stations will break programming to broadcast the alert and subsequent information provided by law enforcement.

### AMBER Alert Criteria

- The child is the age of 17 or younger;
- Law enforcement **has reason to believe** the child is in danger of serious bodily harm or death;
- There is sufficient information available concerning the suspected abductor that the public can respond;
- The notifying law enforcement agency has participated in AMBER training for purposes of issuing AMBER Alerts.
- The plan is not intended for use in runaway or child custody situations.

### How the Plan Works

1. Local law enforcement receives a call about a potential child abduction case.
2. Through local law enforcement standard operating procedures and evaluation of Nebraska AMBER Alert criteria, law enforcement determines whether the situation rises to the level of an AMBER Alert.
3. If determined an AMBER Alert situation, local law enforcement contacts Nebraska State Patrol (NSP) 24 hour dispatch via AMBER Alert facsimile with pertinent information and follows up with a phone call to (402) XXX-XXXX to confirm receipt of the fax.
4. Upon receiving the AMBER Alert facsimile, NSP dispatch center contacts the NSP AMBER Alert verification officer to certify the information received and **confirm it meets the AMBER Alert criteria**.
5. After AMBER Alert verification, NSP AMBER activates the Emergency Alert System (EAS) to release the details of the AMBER Alert to radio and television stations.
6. NSP receives more detailed information from local law enforcement, including picture of the child when possible, and immediately posts the information on their website, [www.nsp.state.ne.us](http://www.nsp.state.ne.us).

7. Participating radio and television stations receive the AMBER Alert over EAS system and broadcast message. It is requested they broadcast the alert at least every 15 minutes for the first 2 hours, and once every half an hour for the next 3 hours.
8. Radio and television stations then go to NSP website for more detailed information and continue to broadcast information over the next three hours or until child is recovered, whichever comes first.



# State of Nebraska AMBER Plan Memorandum of Understanding

Between

## Nebraska Law Enforcement, Nebraska Broadcasters and Nebraska AMBER Plan Committee

This agreement governs the use of the Nebraska AMBER Plan – a collaborative approach between Nebraska law enforcement agencies, broadcasters, and the Nebraska AMBER Plan Committee for the response to the abduction of children. “AMBER” is an acronym for America’s Missing: Emergency Broadcast Response, and is a protocol for alerting the public of a child abduction to solicit information useful in the investigation and recovery of abducted children.

### LAW ENFORCEMENT

**The use of the Nebraska AMBER Plan is permitted by law enforcement agencies upon the following circumstances:**

- Agencies have established a Standard Operating Procedure governing the use of the Nebraska AMBER Plan, and:
- Agencies’ representatives have been trained on the criteria for the activation, as well as the review process, and:
- The agencies agree to submit the proposed Alert to the Nebraska State Patrol with the understanding that an AMBER Alert Verification Officer will then confirm the AMBER criteria have been met before issuing the Alert; and
- The agencies agree not to trigger any alert where all criteria as outlined in the plan have not been met, and:
- The agencies have trained officers to activate the Nebraska AMBER Plan and have provided the Nebraska AMBER Plan Committee with that contact information, and:
- The agencies understand that if they do not have a trained representative they cannot issue an AMBER Alert.

### BROADCASTERS

**The Nebraska AMBER Plan is to be used by Nebraska Broadcasters upon the following circumstances:**

- The stations have established a Standard Operating Procedure governing the receipt and broadcast of AMBER Alerts, and:
- The stations have voluntarily agreed to broadcast AMBER Alerts received by Nebraska State Patrol as received through EAS.

### NEBRASKA AMBER PLAN COMMITTEE

The AMBER Plan Committee:

- Agrees to monitor the Nebraska AMBER Plan from the Nebraska Attorney General’s Office, and to review all alerts to ensure compliance with the criteria, and:
- Agrees to maintain the conduit through which to file suggestions, or grievances pertaining to the use of the Nebraska AMBER Plan, and:
- Agrees to be liaison with Nebraska broadcasters, Nebraska State Patrol, and Nebraska law enforcement to administer the Nebraska AMBER Plan.

### EFFECTIVE DATE

The terms and conditions of this agreement shall become effective on the date that the representative of the requesting party signs this agreement. The provisions of this agreement shall remain in full force and effect until such time that this agreement is modified or terminated by the parties.

### FOR LAW ENFORCEMENT:

- Department elects to adopt State of Nebraska AMBER Plan Standard Operating Procedures.
- Department elects to adopt its own Standard Operating Procedures. Copy attached.

## **ANNEX “B”**

### **SCHEDULE OF REQUIRED MONTHLY TESTS (RMT) 2007**

January 4, 2007	Thursday	11:00 AM
February 6, 2007	Tuesday	11:00 PM
March 3, 2007	Saturday	11:00 AM
April 9, 2007	Monday	11:00 PM
May 2, 2007	Wednesday	10:30 AM
June 7, 2007	Thursday	11:00 PM
July 8, 2007	Sunday	09:00 AM
August 8, 2007	Wednesday	11:00 PM
September 6, 2007	Thursday	11:00 AM
October 11, 2007	Thursday	11:00 PM
November 5, 2007	Monday	10:30 AM
December 4, 2007	Tuesday	11:00 PM

### **SCHEDULE OF REQUIRED MONTHLY TESTS (RMT) 2008**

January 16, 2008	Wednesday	10:00 AM
February 11, 2008	Monday	11:00 PM
March 9, 2008	Sunday	9:00 AM
April 15, 2008	Tuesday	11:00 PM
May 10, 2008	Saturday	10:00 AM
June 12, 2008	Thursday	11:00 PM
July 11, 2008	Friday	10:00 AM
August 5, 2008	Tuesday	11:00 PM
September 14, 2008	Sunday	9:00 AM
October 15, 2008	Wednesday	11:00 PM
November 7, 2008	Friday	10:00 AM
December 8, 2008	Monday	11:00 PM